



Rusbridge Close Shacklewell, London E8

**NEXT MOVE**  
PROPERTY AGENTS

---

## Rusbridge Close

### Shacklewell

### London E8

---

Superb modern three bedroom townhouse set back from the road in a tranquil development with off-street parking.



#### DESCRIPTION

This bright and well-cared for residence is arranged over three floors with the accommodation comprising living room; kitchen-dining room with integrated appliances; utility room; bathroom and three double bedrooms, one with an ensuite shower room. A 30' paved private garden to the rear offers low-maintenance upkeep. There is also plenty of storage space, with large cupboards on each floor. Designated parking at the front of the building provides space for one car.

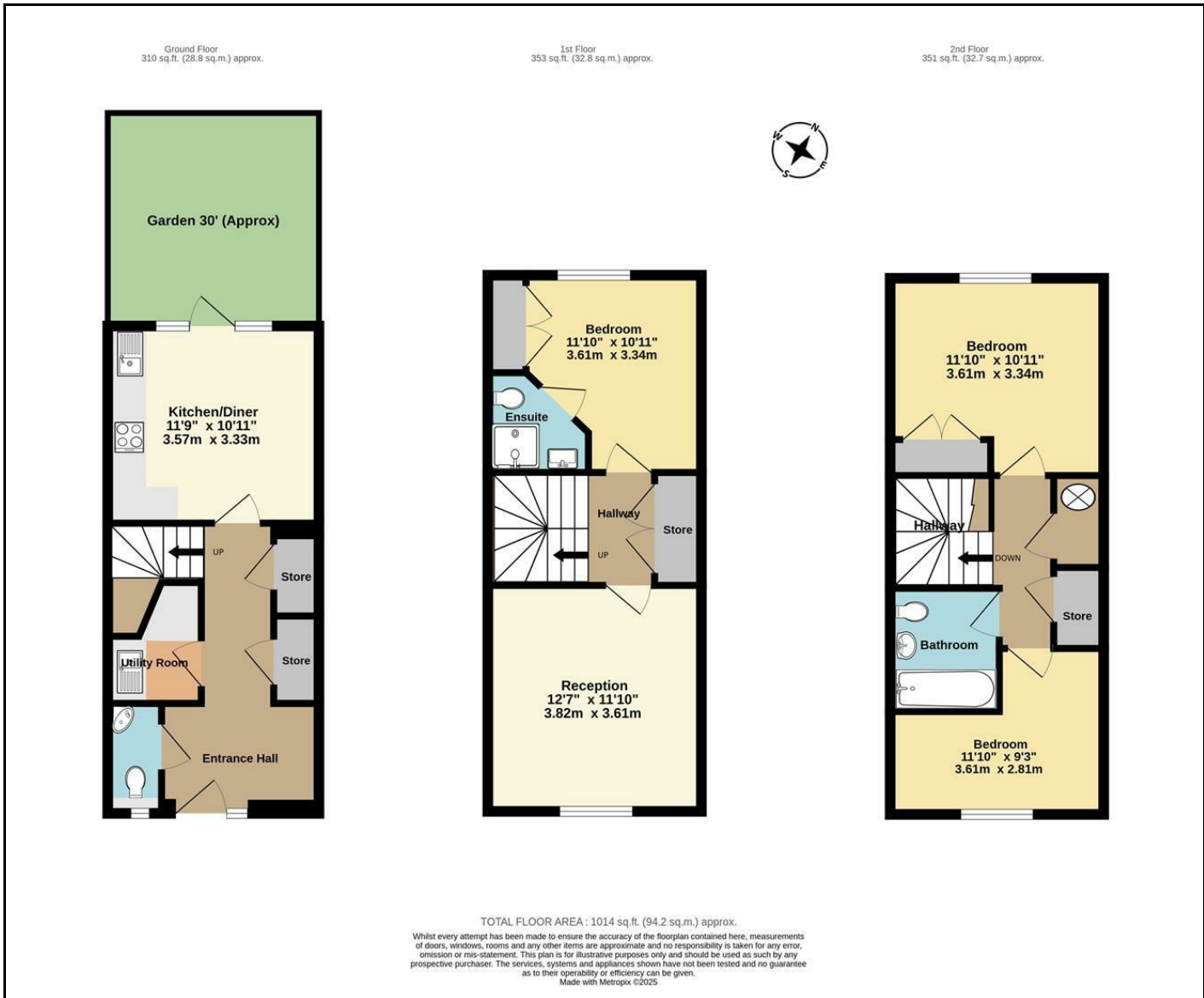
Rusbridge Close is in a great location just off Amhurst Road, moments from the green open spaces of Hackney Downs, close to Hackney Downs Station (Overground), and a short walk from shops in Hackney and Dalston. Available chain free.



Freehold

£775,000





Energy Efficiency Rating		Current	Potential
<i>Very energy efficient - lower running costs</i>			
(92 plus)	A		
(81-91)	B		
(69-80)	C		
(55-68)	D		
(39-54)	E		
(21-38)	F		
(1-20)	G		
<i>Not energy efficient - higher running costs</i>			
<b>England &amp; Wales</b>		EU Directive 2002/91/EC	