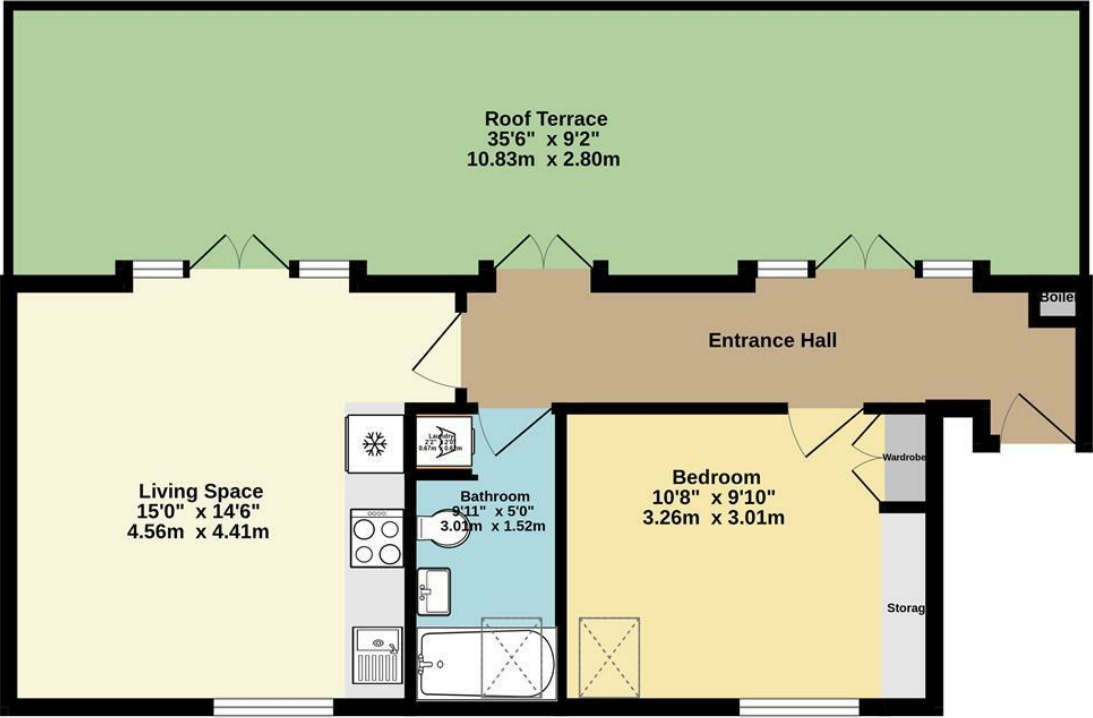


Top Floor  
461 sq.ft. (42.8 sq.m.) approx.



Chatsworth Road E5

TOTAL FLOOR AREA : 461 sq.ft. (42.8 sq.m.) approx.

Whilst every attempt has been made to ensure the accuracy of the floorplan contained here, measurements of doors, windows, rooms and any other items are approximate and no responsibility is taken for any error, omission or mis-statement. This plan is for illustrative purposes only and should be used as such by any prospective purchaser. The services, systems and appliances shown have not been tested and no guarantee as to their operability or efficiency can be given.

Made with Metropix ©2025



Energy Efficiency Rating		
	Current	Potential
Very energy efficient - lower running costs		
(92 plus) A		
(81-91) B		
(69-80) C		
(55-68) D		
(39-54) E		
(21-38) F		
(1-20) G		
Not energy efficient - higher running costs		
England & Wales	64	64
EU Directive 2002/91/EC		

Chatsworth Road E5 OFF

£500,000 Leasehold

nextmove.com





- Penthouse Apartment
- Bright & Generous Space
- Modern Bathroom

- Large Roof Terrace
- Open-Plan Living Room
- Central Location

Fantastic top floor one bedroom apartment with large roof terrace in a superb central location. Having been beautifully refurbished this delightful residence offers wonderfully bright, spacious and well-proportioned rooms throughout. The accommodation boasts a generous living space with smart contemporary kitchen, stylish bathroom and large double bedroom with built-in wardrobe. Three sets of French doors lead out to a huge roof terrace.

Chatsworth Road's eclectic array of eateries, independent shops and coffee bars are right on the doorstep. Excellent transport links are close by with Overground trains from stations at Homerton and Clapton heading to The City & West End or Westfield Shopping Centre.

Note: Next Move disclose an interest in this property.

