



High Street Stoke Newington, London N16

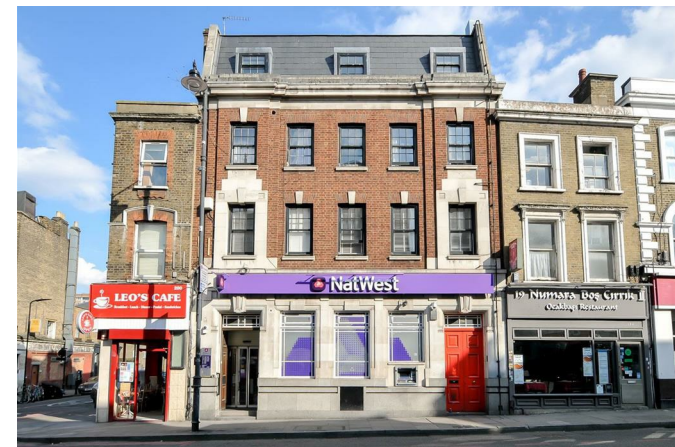
NEXT MOVE
PROPERTY AGENTS

High Street

Stoke Newington

London N16

Stunning one bedroom flat in a fantastic location close to all local amenities.



DESCRIPTION

Set within an imposing four storey building on Stoke Newington High Street, this superb residence offers light and spacious rooms with high ceilings, and parquet flooring. Boasting wonderful contemporary styling, the accommodation features generous living and entertaining space with a smart stainless steel kitchen area and integrated appliances; large storage cupboard; tiled shower room and double bedroom with windows on two sides.

Fabulously situated moments from Stoke Newington Church Street and the High Street's eclectic array of shops, eateries and coffee bars, not to mention popular pubs too. There are excellent transport links to The City and West End, with numerous good bus routes and trains to Liverpool Street from nearby Stoke Newington Station (Overground).

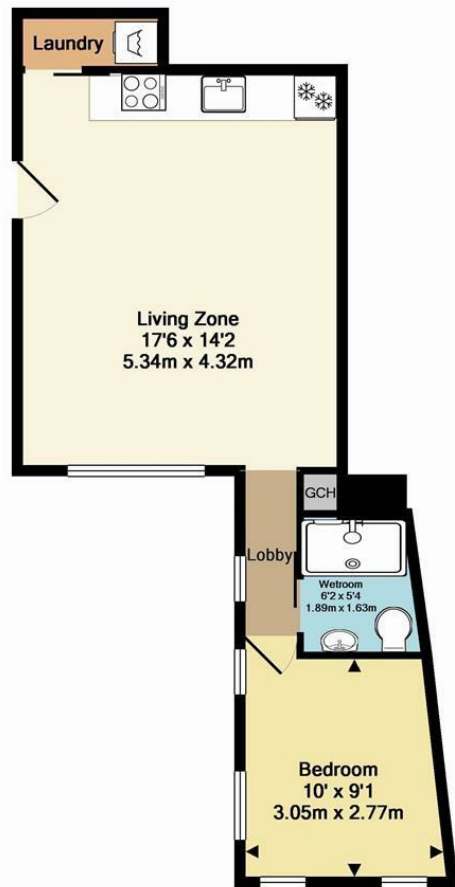
Offered for sale with no onward chain.

Leasehold

Asking Price £425,000







High Street 196A Flat 1A
 Total Approx. Floor Area 406 Sq.Ft. (37.7 Sq.M.)

Illustration for identification purposes. Not to scale. All measurements are approximate and for guidance only. © Next Move 2013
 Made with Metropix ©2013



Energy Efficiency Rating		Current	Potential
Very energy efficient - lower running costs			
(92 plus) A			
(81-91) B			
(69-80) C		74	76
(55-68) D			
(39-54) E			
(21-38) F			
(1-20) G			
Not energy efficient - higher running costs			
England & Wales		EU Directive 2002/91/EC	

NEXT MOVE
 PROPERTY AGENTS

n16@nextmove.com
 020 7254 9709
 63-65 Stoke Newington Church Street,
 London N16 0AR

nextmove.com