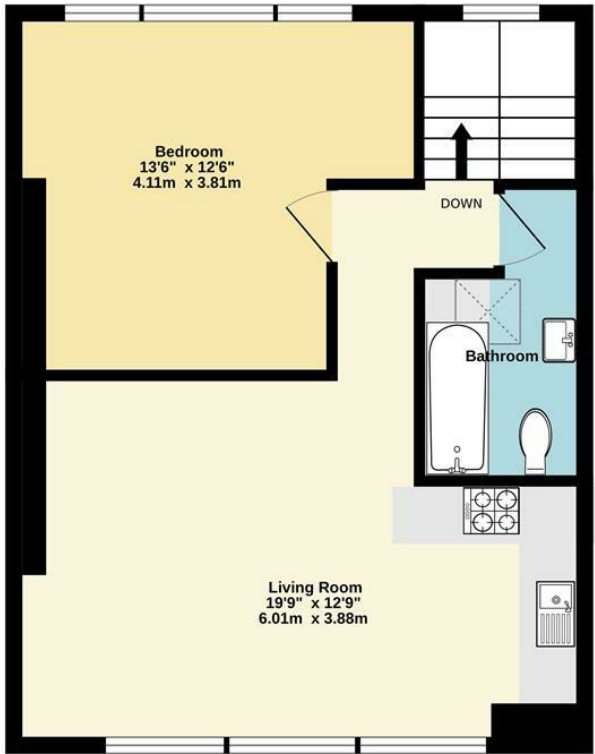
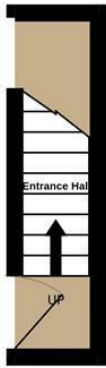


1st Floor
34 sq.ft. (3.2 sq.m.) approx.

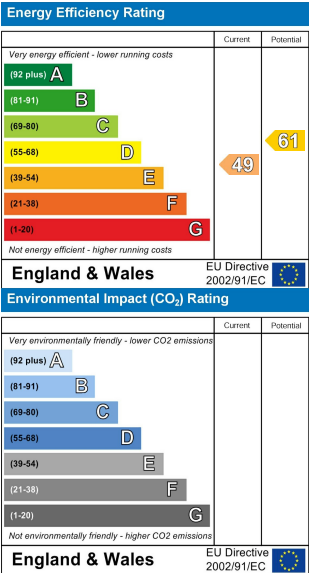
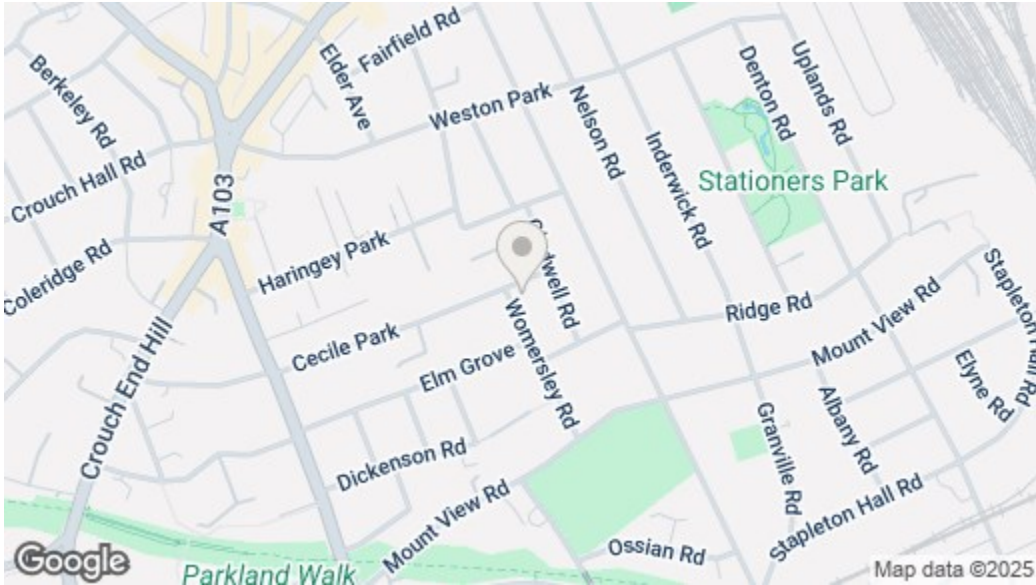
2nd Floor
464 sq.ft. (45.0 sq.m.) approx.



Cecile Park, N8

TOTAL FLOOR AREA : 518 sq.ft. (48.2 sq.m.) approx.

Whilst every attempt has been made to ensure the accuracy of the floorplan contained here, measurements of doors, windows, rooms and any other items are approximate and no responsibility is taken for any error, omission or mis-statement. This plan is for illustrative purposes only and should be used as such by any prospective purchaser. The services, systems and appliances shown have not been tested and no guarantee as to their operability or efficiency can be given.
Made with Metropix ©2023



Cecile Park N8 9AR

£395,000 Leasehold

nextmove.com

Property Misdescriptions Act 1991
These particulars are thought to be materially correct though their accuracy is not guaranteed and they do not form part of any contract. All measurements are given only as a guide and services & appliances have not been tested. Purchasers are advised to appoint their own Surveyors & Conveyancers to satisfy themselves on all matters concerning any purchase.

63-65 Stoke Newington Church Street, London N16 0AR • Tel: 020 7254 9709 Fax: 020 7275 8590 • e-mail: n16@nextmove.com
320 Upper Street, London N1 2XQ • Tel: 020 7226 5050 Fax: 020 7226 5051 • e-mail: n1@nextmove.com
70-72 Chatsworth Road, London E5 0LS • Tel: 020 8525 0222 Fax: 020 8525 1230 • e-mail: e5@nextmove.com



- Top Floor Conversion
- Generous Living Room
- Moments From The Broadway
- One Bedroom Flat
- Sought-After Location
- Excellent Transport Links

Wonderfully spacious and light one bedroom flat set on one of Crouch End's most popular streets.

This superb property is arranged on the top floor (second) of an attractive semi-detached Victorian house. The accommodation, with a floor area in excess of 500 sq ft, comprises a generous living room with kitchen area; large double bedroom, and modern bathroom.

All of the shops and eateries of The Broadway are close by, as are numerous good bus routes and trains from nearby Crouch Hill Station (Overground).

