



Church Street Stoke Newington, London N16

NEXT MOVE
PROPERTY AGENTS

Church Street

Stoke Newington

London N16

Stunning two bedroom upper maisonette with large roof terrace, in this fabulous central location.



DESCRIPTION

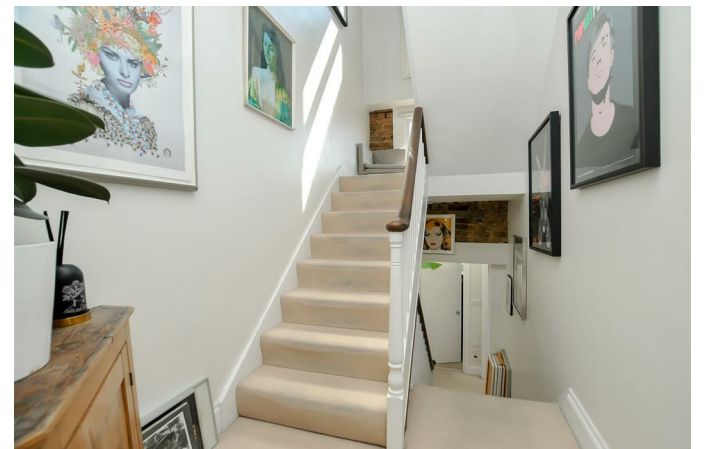
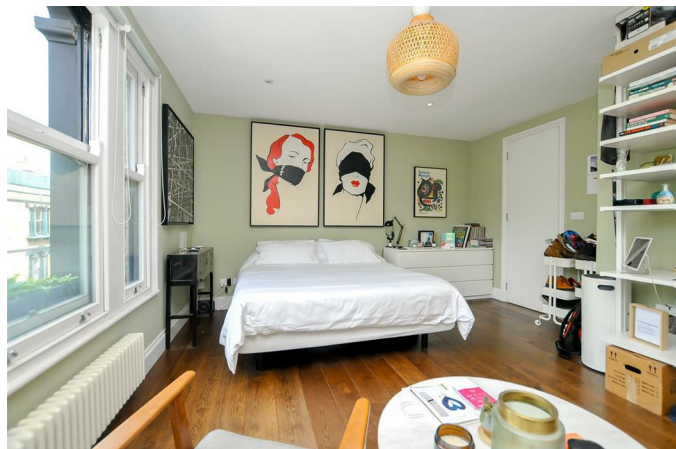
This superb residence is set on the upper floors of an attractive Victorian terrace above commercial premises (an Estate Agent). Entering on the first floor, the main living space is arranged over the second and third floors, comprising a generous open-plan reception room and smart modern kitchen with incredible cityscape views. To the front, full-width folding doors open to the roof terrace. Elsewhere the property boasts two stylish bathrooms and three beautiful double bedrooms.

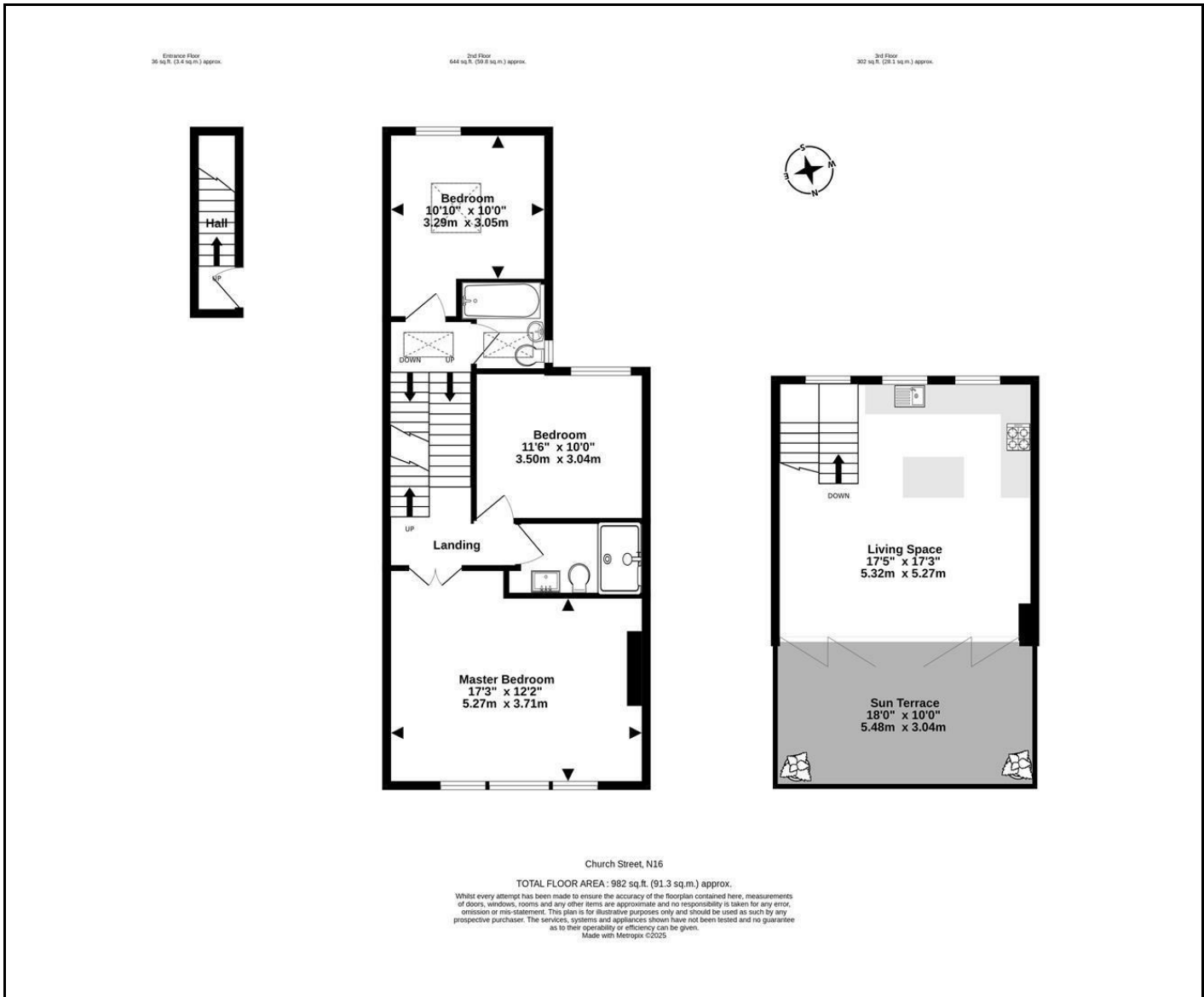
Leafy Clissold Park and Church Street's multitude of eateries, shops, pubs and coffee bars are right on the doorstep. There are excellent transport links to The City and West End with numerous good bus routes, and trains to Liverpool Street from nearby Stoke Newington Station (Overground).



Leasehold

Asking Price £850,000





Energy Efficiency Rating		Current	Potential
Very energy efficient - lower running costs			
(92 plus) A			
(81-91) B			
(69-80) C			
(55-68) D		60	
(39-54) E			
(21-38) F			
(1-20) G			
Not energy efficient - higher running costs			
England & Wales		EU Directive 2002/91/EC	

NEXT MOVE
PROPERTY AGENTS

n16@nextmove.com
020 7254 9709
63-65 Stoke Newington Church Street,
London N16 0AR

nextmove.com