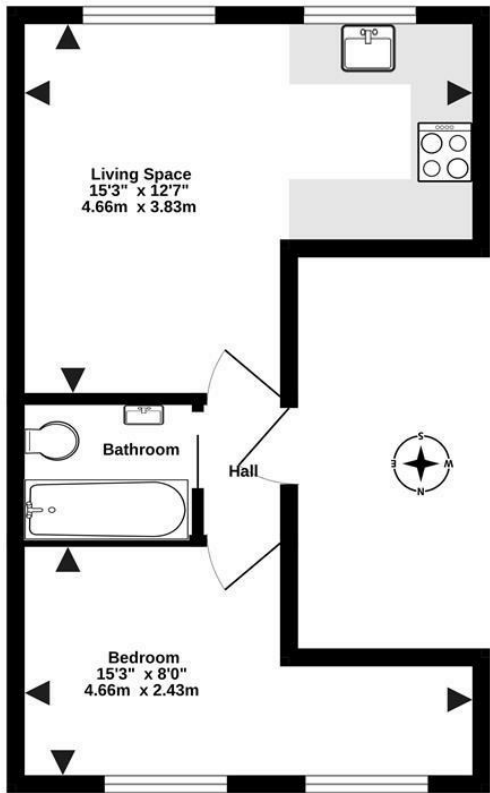
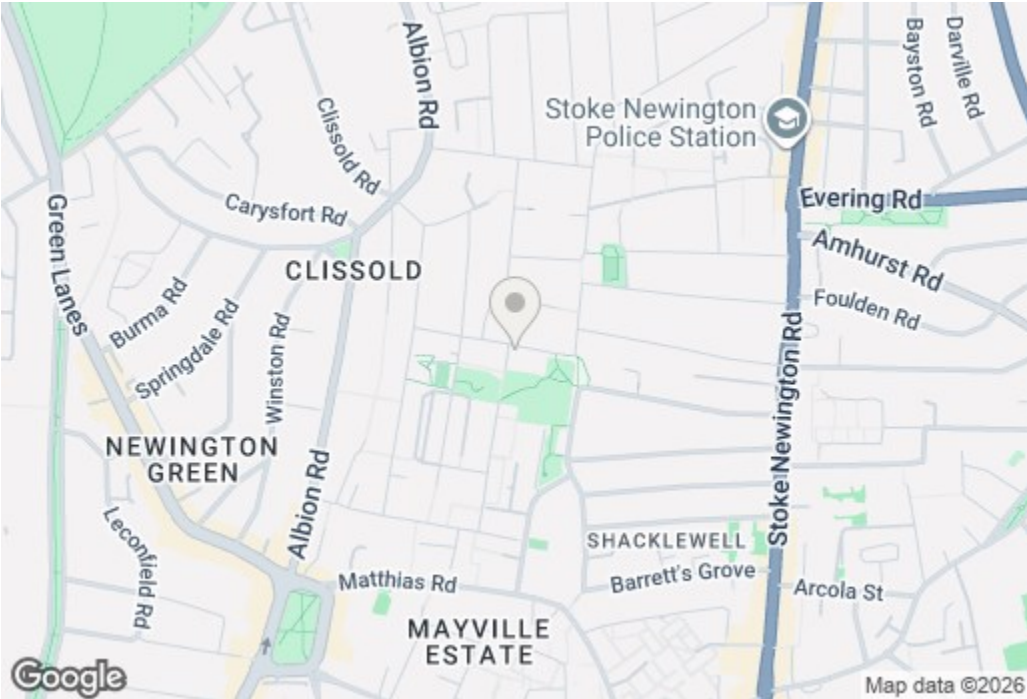


Ground Floor
301 sq.ft. (28.0 sq.m.) approx.



Allen Road N16
TOTAL FLOOR AREA: 301 sq.ft. (28.0 sq.m.) approx.
Whilst every attempt has been made to ensure the accuracy of the floorplan contained here, measurements of doors, windows, rooms and any other items are approximate and no responsibility is taken for any error, omission or mis-statement. This plan is for illustrative purposes only and should be used as such for any prospective purchaser. The services, systems and appliances shown have not been tested and no guarantee as to their operability or efficiency can be given.
Made with Metropix ©2026

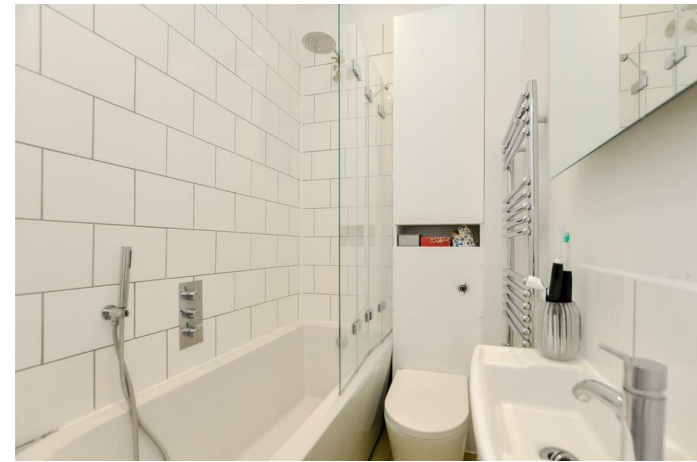


Energy Efficiency Rating		
	Current	Potential
Very energy efficient - lower running costs		
(92 plus) A		
(81-91) B		
(69-80) C		
(55-68) D		
(39-54) E		
(21-38) F		
(1-20) G		
Not energy efficient - higher running costs		
England & Wales	EU Directive 2002/91/EC	

Allen Road N16 8SD

£375,000 Share of Freehold

nextmove.com



- One Bedroom Flat
- Period Conversion
- Close to Church Street & the High Street
- First Floor
- Ideal For First-Time-Buyers
- Excellent Transport Links

Superb one bedroom flat in a great location for shops and transport links. Arranged over the first floor of a four storey Victorian terraced house the property is perfect for a first-time-buyer or those looking to invest. The accommodation comprises a south-facing open-plan living room with kitchen area; stylish modern bathroom with shower over the bath; and beautiful double bedroom. Overlooking Butterfield Green, and a short walk from Stoke Newington High Street, Church Street and Dalston. There are excellent transport connections to the City and West End, with numerous bus routes, and Overground trains from stations at Dalston Kingsland (Mildmay), Dalston Junction (Windrush), Rectory Road (Weaver) and Canonbury (Mildmay & Windrush). Offered for sale chain free.

