



Darenth Road Stamford Hill, London N16

**NEXT MOVE**  
PROPERTY AGENTS



---

## Darenth Road

### Stamford Hill

### London N16

---

Huge extended six bedroom Victorian terraced house in a great location moments from Stamford Hill's shops and transport links.



#### DESCRIPTION

Arranged over four floors the property offers bright and well-proportioned rooms throughout, with the accommodation comprising three reception rooms, four bathrooms, generous kitchen-diner and six beautiful double bedrooms. A secluded paved garden to the rear boasts a large workshop/store.

Darenth Road is a popular tree-lined street situated just a few steps from leafy Springfield Park and an array of local shops. There are excellent transport connections to the City and West End with numerous bus routes, and trains from stations at Stamford Hill (Overground), South Tottenham (Overground), and Seven Sisters (Tube, Overground, National Rail).

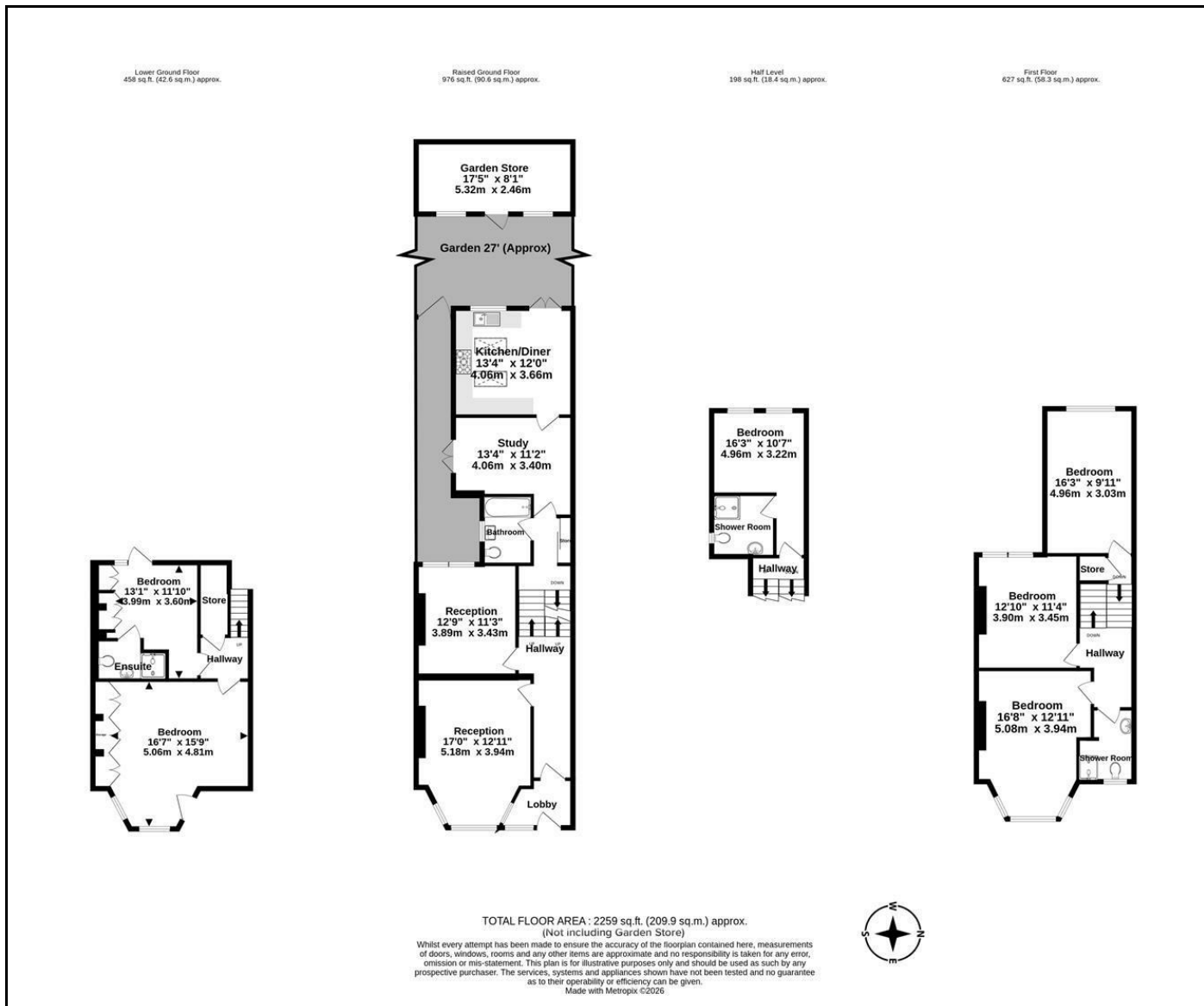



Freehold

Asking Price £1,850,000







Energy Efficiency Rating		Current	Potential
Very energy efficient - lower running costs			
(92 plus)	A		
(81-91)	B		
(69-80)	C		
(55-68)	D		
(39-54)	E		
(21-38)	F		
(1-20)	G		
Not energy efficient - higher running costs			
England & Wales		EU Directive 2002/91/EC	

**NEXT MOVE**  
PROPERTY AGENTS

n16@nextmove.com  
020 7254 9709  
63-65 Stoke Newington Church Street,  
London N16 0AR

nextmove.com